

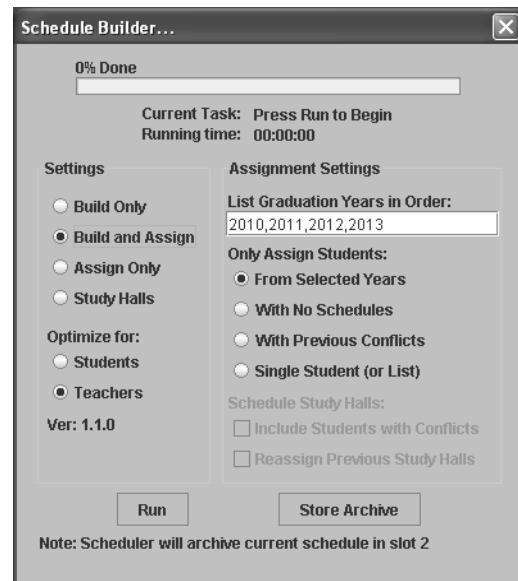
# web 2 school

## SCHEDULE BUILDER SYSTEM

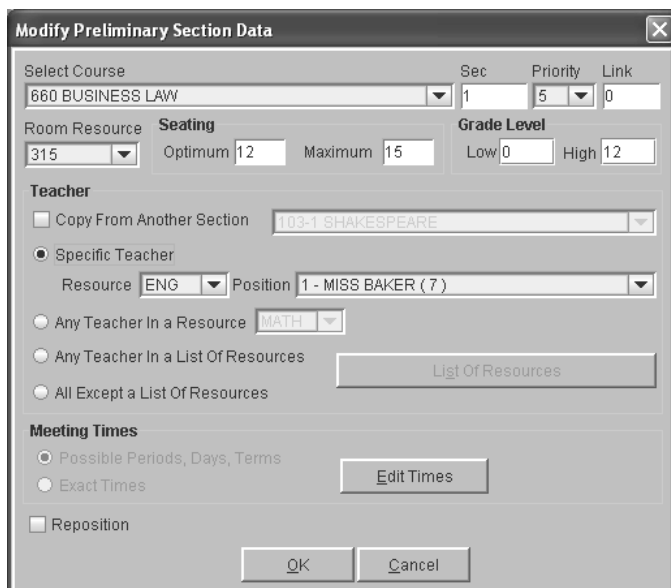
### overview

This system allows the user to produce a master schedule in days using the computer rather than in weeks using valuable staff time. The Schedule Builder makes it possible to enter preliminary section data only once. Once it has been entered, this same data can be modified and reused year after year to build subsequent master schedules.

Course Requests are entered for each student. Based on these requests the program assigns students to classes in the master schedule and prints student schedules. Both student schedules and the final Master Schedule can be edited manually as needed.



### special features



- ◇ 5 or 6 day week
- ◇ Restrict Courses by Grade Level
- ◇ Prioritizes by course number, number of sections, number of requests
- ◇ Customizable Day Names
- ◇ Back-to-back Science Classes and Labs
- ◇ Accommodates Block Scheduling
- ◇ Balances Sections While Assigning Students
- ◇ Offers Course/Section Linking
- ◇ Lock-Out Teacher or Department meeting times

Call WGS 1-800-237-5530

